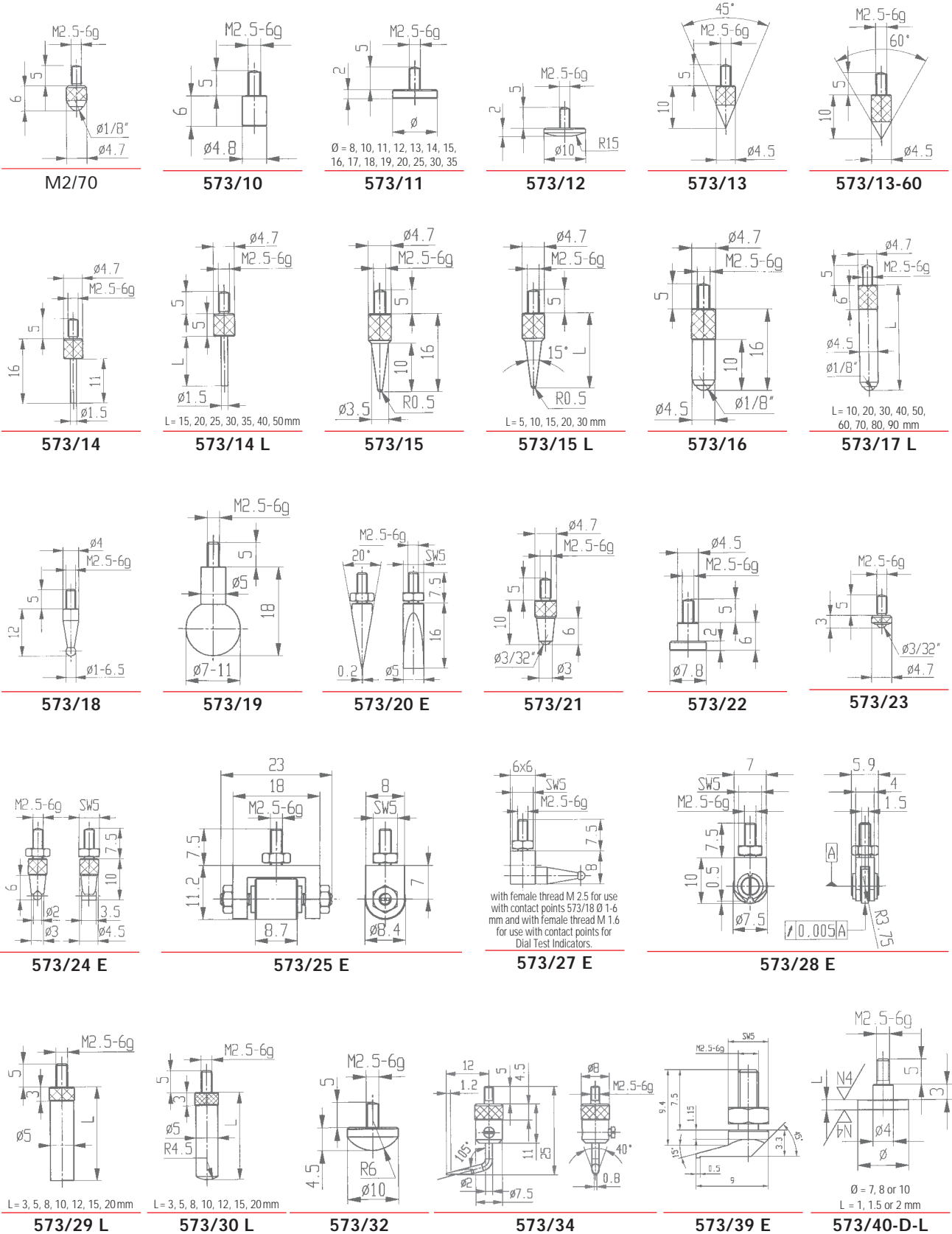


Contact Points for Dial Gauges and Comparator Gauges

with male thread M 2.5



Contact Point Extensions

Contact Points with carbide (H) or ceramic (C) insert

Contact Points with balls from ruby (R), sapphire (S) or plastic (KU)

with male thread M 2.5

Contact Point Extensions:

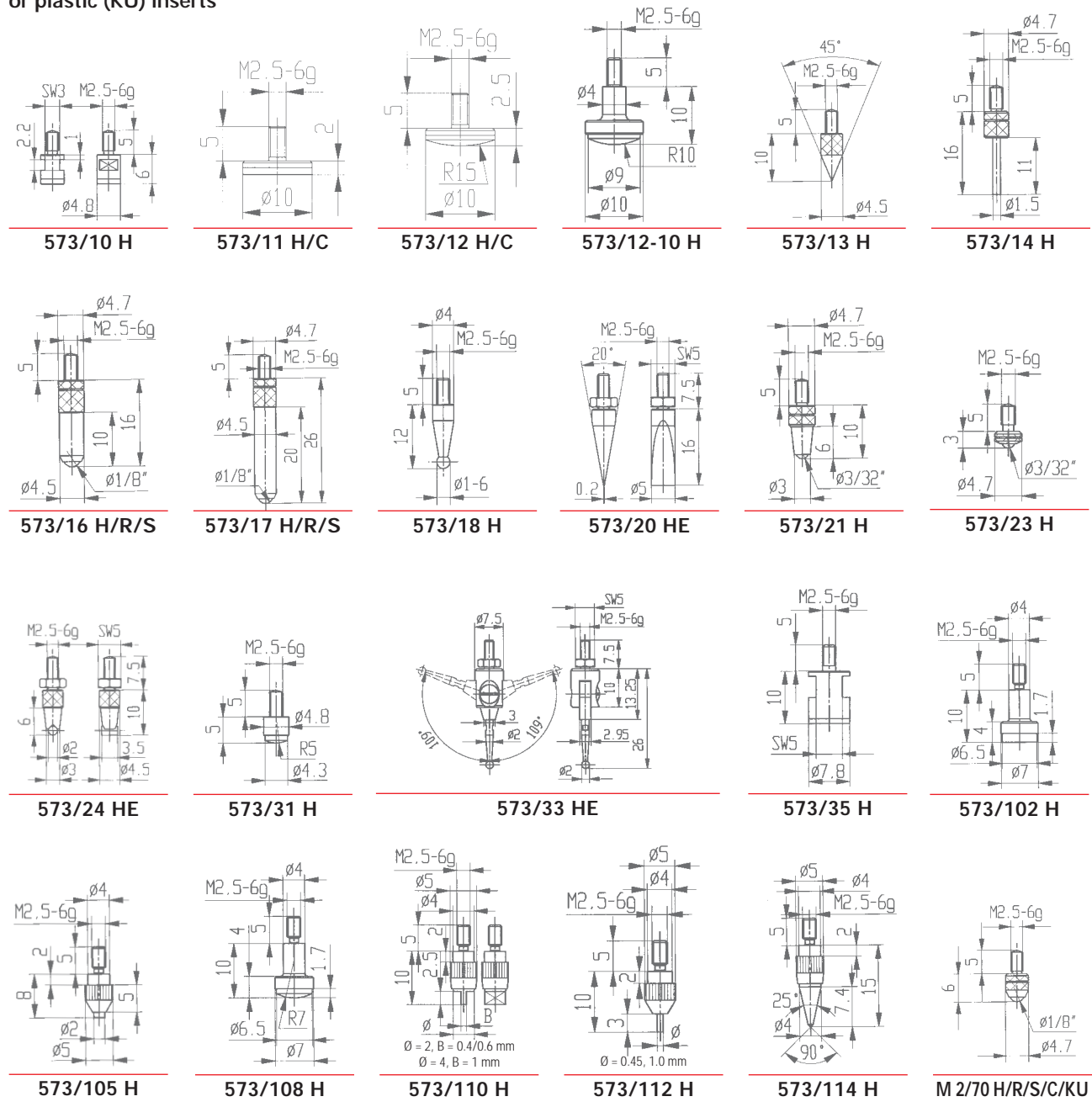
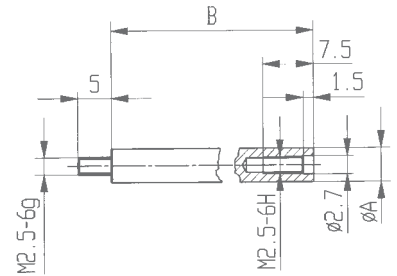
Dimension A: 4 mm (used at Dial Gauges with spindle Ø of 4 mm)

Dimension A: 5 mm (used at Dial Gauges with spindle Ø of 5 mm)

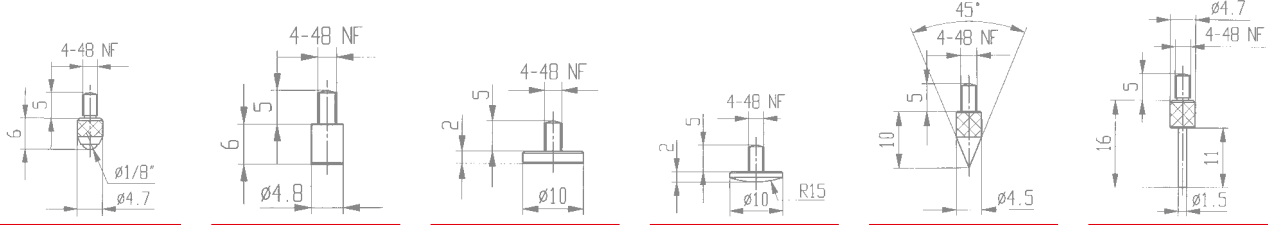
Dimension B available in the following standard lengths: 10, 15, 90, 95 and 100 mm

Custom lengths are available.

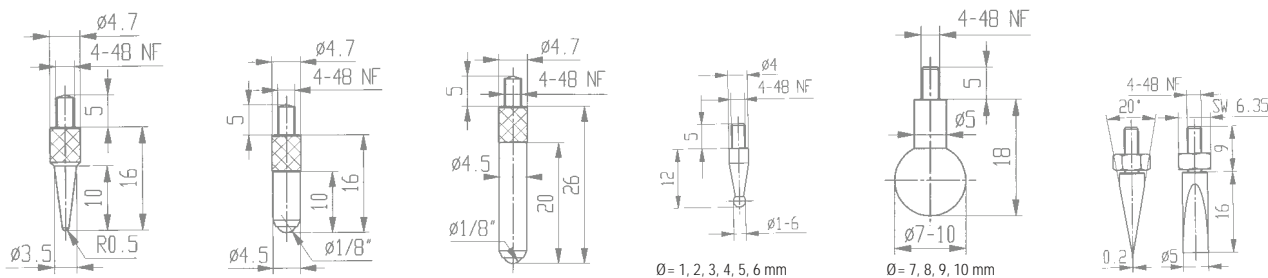
Contact Points with carbide (H), ruby (R), sapphire (S), ceramic (C), or plastic (KU) inserts



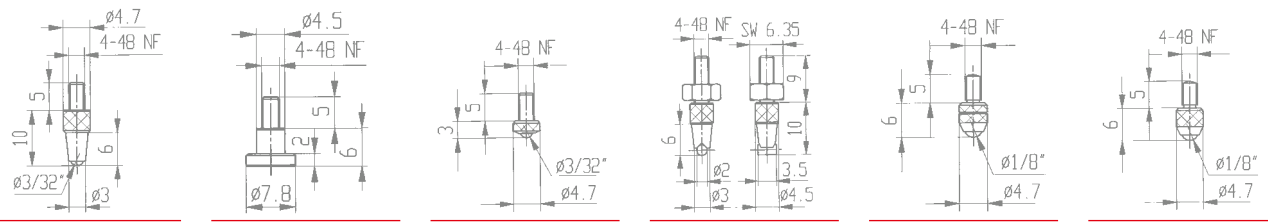
Steel contact points (Z) for Dial Gauges and Comparator Gauges
Carbide (HZ) and ruby (RZ) contact points
with 4/48 male threads



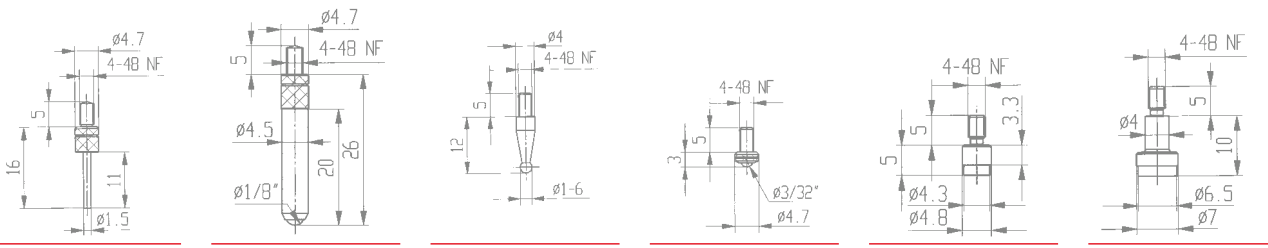
M2/70 Z 573/10 Z 573/11 Z 573/12 Z 573/13 Z 573/14 Z



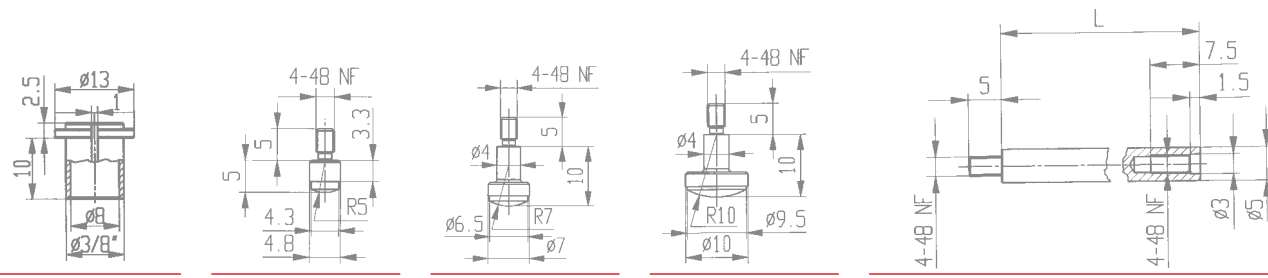
573/15 Z 573/16 Z 573/17 Z 573/18 Z 573/19 Z 573/20 ZE



573/21 Z 573/22 Z 573/23 Z 573/24 ZE M2/70 HZ M2/70 RZ/SZ



573/14 HZ 573/17 HZ 573/18 HZ 573/23 HZ 573/101 HZ 573/102 HZ



Adapter 62168 573/107 HZ 573/108 HZ 573/109 HZ Contact Point Extensions

Dimension L available in the following standard lengths:
 1", 2", 3" and 4". Custom lengths are available.