



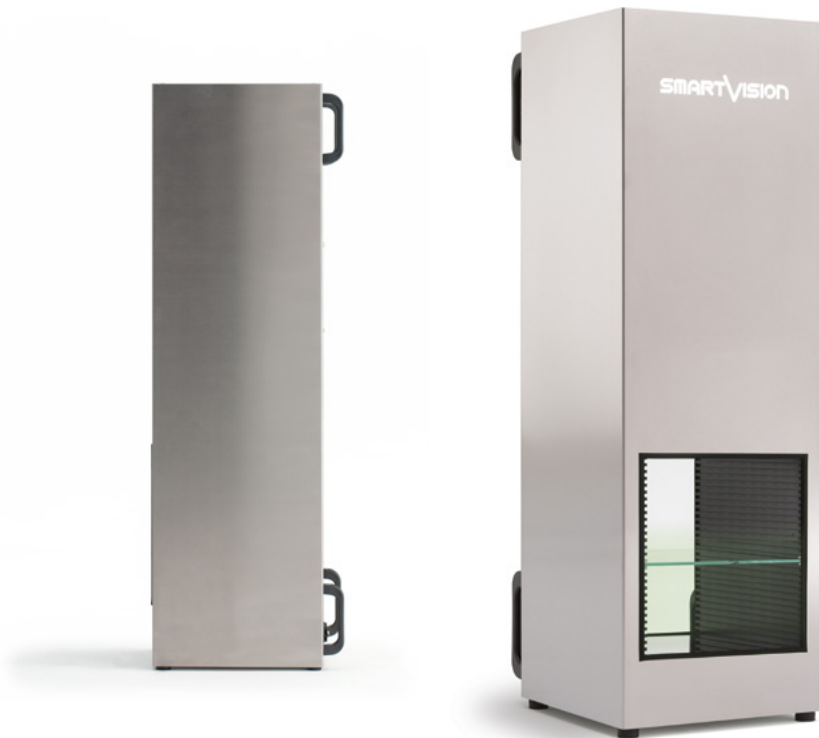
Great Performance, Easy Price

Easy_Projector

Price/Performance Digital Profile Projector

Easy_Projector

Price/Performance Digital Profile Projector



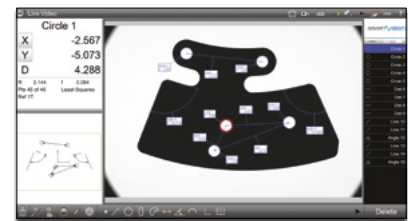
*"Easy_Projector
the best Price/Performance
Video Measuring Machine
for the future of
metrology"*



Low Price & High Performances

This special line offers products of same quality as traditional Smart_Projector family and similar performances related to the specific size of Field of View (FoV).

With no additional functionalities it makes what you need for your basic dimensional control in a fast and simple way with a small investment. It is equipped with a Mini PC NUC (Next Unit Computing) and a metrology software.



- Automatic feature recognition
- Automatic data report

Product Highlights

Easy_Projector - Main Benefits

- Specifically suited for massive (production) quality inspection, in-line control, incoming inspection
- Eliminates subjectivity and errors of operator-based gauging
- Increases number of quotas and quality check rate, up to 16000 checking features in a few seconds
- Performs full automatic reporting and SPC (Min, Max, Range, Average, Std Dev, 6 Sigma)
- Designed for in-production massive use
- Plug-and-play, it is ready to use
- Suitable for unskilled operators use
- Flexible investment with a fast Return on Investment
- Reduces time and costs of controls

Features

Price/Performance Digital Profile Projector

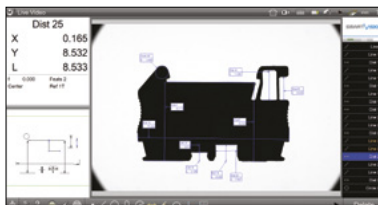
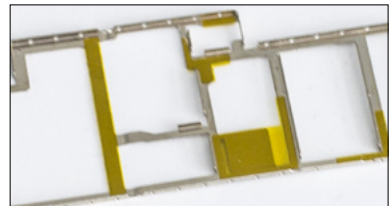


- Industrial high resolution camera
- High performance Bi-Telecentric Optics
- Rugged stainless steel industrial case
Compact static equipment
- Ready for Automation
- Protected Two Side Open measuring chamber
Easy object placement
Height-adjustable interchangeable glass
Customizable loading plate
- Suitable for the production line
- Directional Diascopic Light

Applications

Quality Control for Industrial Applications

FLAT ELEMENTS



Specification

Easy_Projector - Price/Performace Digital Profile Projector

PC Device	NUC Mini PC without monitor with Windows 10 PRO 64-bit
Light receiving lens	Double telecentric lens
Field of View ³ (FoV) ³ (mm)	92x61
FoV ³ Diagonal (mm)	100
FoV ³ Area (mm) ²	5485
Measuring Chamber (mm) ⁵	203x250x280
Repeatability Accuracy ⁴	±1 µm
Measurement Accuracy ⁴	±6 µm
Dimensions (mm)	290x330x880
Weight (kg)	25
Diascopic Light ¹	Directional
Operation ambient °C	+10 to +40°C
Power supply	110-240 Vac 50-60 Hz
Power consumption	2 A
Measurement points	16000 features max
Pattern search	XYθ (accepts random positioning)
Tolerance	Angle, angularity, area, circumference, concentricity, diameter, flatness, form, length, parallelism, perpendicularity, radius, roundness, runout, straightness, symmetry, true position, width, XY position
Statistical Analysis	Ready to connect with SPC software
CAD export	dxf file with nominal values and tolerance
CAD import	dxf file for profile match, nominal values and tolerance
Data Report	csv, tsv, txt
Print Report	Windows installed Printer (optional pdf), xps
User account control	Supervisor, Users 1 to 20 (with password login and editable rights)
Multi language interface	English, German, Spanish, French, Italian, Portuguese, Russian, Chinese, Japanese, Polish, Czech, Romanian All languages are editable

¹ Diascopic Light: Standard Directional led backlight.

³ Standard models - other custom FoV available on request.

⁴ Precision of measurement (±µm) of a line, obtained measuring a specific calibration target located approximately in FoV center, best focus position, at 25° C ±1°.

⁵ The dimensions of the measuring chamber are not the dimensions of the Field of View, therefore they have not to be considered as test area.



©2018, SmartVision. Technical specifications are approximated and are subject to change without notice. Printing errors excepted.